



KÖSTER Postive Side Waterproofing

References



Philosophy:

Cutting edge system
solutions & support



Dr. Dieter Köster
CEO

„Sustainable solutions
of excellent quality and
comprehensive support –
that you can rely on“



Johann Köster
Founder

Chairman of the supervisory
board of KÖSTER BAUCHEMIE
AG and CEO of the German
roof organization of all german
construction chemistry
producers in the 4th period of
office.



PORTO MONTENEGRO'S MARINA

Description: External basement waterproofing

Products: KÖSTER NB 1 Grey
KÖSTER Polysil TG 500






INDUSTRIAL PARK

Description: 15.000 m² of external basement waterproofing had been carried out.

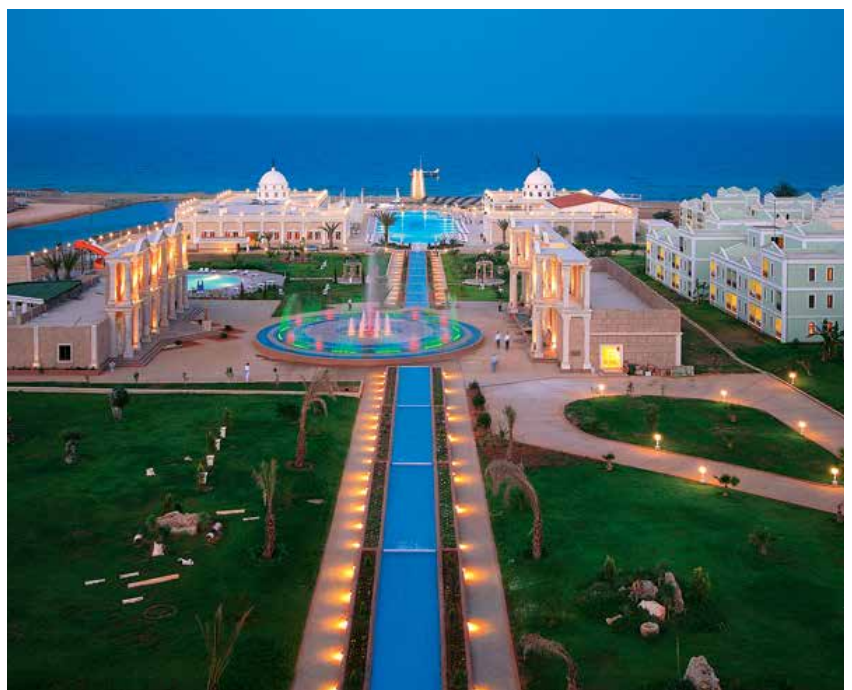
Products: KÖSTER KBE Liquid Film
KÖSTER NB 1 Grey



KAYA ARTEMIS HOTEL

Description: Exterior basement waterproofing with mineral based waterproofing systems

Product: KÖSTER NB 1 Grey





**OFFICE BUILDING IN THE
ROCCA AL MARE AREA**

Description: Waterproofing of
basement walls from the positive side
with cold self-adhesive membranes

Product: KÖSTER KSK SY 15



**STUDENT HOUSING OF THE
TECHNICAL UNIVERSITY**

Description: Waterproofing ceilings
of underground car garages from
the positive side with cold self-
adhesive membranes on an area of
9.000 m²

Products: KÖSTER Bitumen Emulsion
KÖSTER KSK SY 15






ENBW GAS POWER PLANT

Description: Installation of protective and waterproofing layer from the outside on multiple areas

Product: KÖSTER NB 4000



AJAX-ARENA

Description: Complete basement waterproofing from the positive side with bitumen based waterproofing system

Product: KÖSTER Deuxan 2C



UNIVERSITY MEDICAL CENTER

Description: External basement waterproofing


Product: KÖSTER Deuxan 2C



ABN-AMROBANK HEADQUARTER

Description: Waterproofing of 6000 m² of basement area from the positive side

Product: KÖSTER Deuxan 2C



ESTATE BUILDING

Description: External basement waterproofing with the hybrid waterproofings system KÖSTER NB 4000

Product: KÖSTER NB 4000



TU - UNIVERSITY OF TECHNOLOGY

Description: Waterproofing the basement from the external side through spray application

Product: KÖSTER Deuxan Professional






OLD POST STATION

Description: Exterior basement waterproofing with KÖSTER NB 4000 and horizontal barrier with KÖSTER Crisin 76

Product: KÖSTER NB 4000



HONDA FACTORY

Description: Waterproofing the basement walls and beneath the slab with bitumen based waterproofing systems

Products: KÖSTER Deuxan 2C
KÖSTER Repair Mortar





INDUSTRIAL BUILDING

Description: External basement waterproofing with bitumen based waterproofing system

Products: KÖSTER Deuxan 2C
KÖSTER SD Protection
and Drainage Sheet 3-250



**MICROSOFT DATACENTRE
AGRIPORT**

Description: External basement
waterproofing with bitumen based
waterproofing systems

Product: KÖSTER Deuxan 2C



**NEW CONSTRUCTION
SHOPPING CENTER**

Description: Waterproofing of concrete walls with KÖSTER KSK membranes

Products: KÖSTER KSK SY 15
KÖSTER Primer BL




PHYWE GMBH

Description: 800 m² exterior basement waterproofing using spray equipment

Products: KÖSTER Betomor Multi A
KÖSTER Bikuthan 2C
KÖSTER Polysil TG 500
KÖSTER Repair Mortar





HEB FLORES BUILDING

Description: 2.400 ft² exterior basement waterproofing on historical building with bitumen based waterproofing system

Product: KÖSTER KBE Liquid Film



SCHOOL

Description: Positive side waterproofing of school's basement

Products: KÖSTER Bitumen Primer
KÖSTER Deuxan 2C





OPTIMUM SHOPPING CENTER

Description: External basement waterproofing with bitumen based waterproofing systems

Product: KÖSTER Deuxan 2C

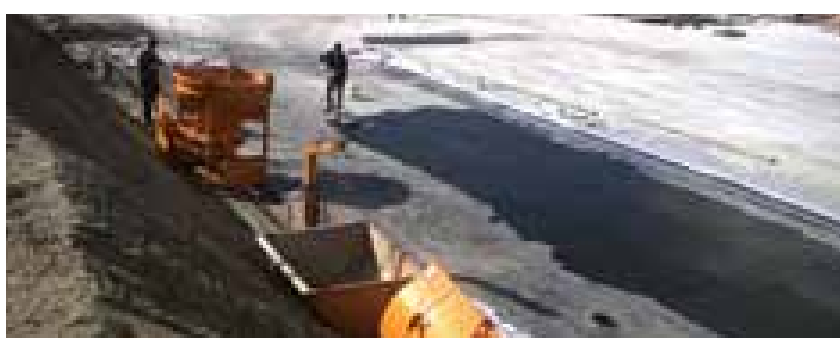


PRIVATE HOUSE

Description: External basement waterproofing with cold self-adhesive waterproofing membranes

Products: KÖSTER KBE Liquid Film
KÖSTER KSK SY 15





NEW CONSTRUCTION OF HELIOS KLINIKUM AUE

Description: Waterproofing of a floor slab against radon, as well as vertical waterproofing according to DIN 18195/Part 6 with PMBC

Products: KÖSTER Deuxan 2C
KÖSTER KBE Liquid Film
KÖSTER KSK SY 15
KÖSTER Special Joint Tape




NEW CONSTRUCTION PRIVATE HOUSE

Description: External basement waterproofing with cold self-adhesive waterproofing membranes

Products: KÖSTER Butyl Fix-Tape Fleece
KÖSTER KSK Primer SP
KÖSTER KSK SY 15
KÖSTER Special Joint Tape





**SETTLEMENT CONSTRUCTION
PROJECT GERASDORF 2**

Description: External basement waterproofing with cold self-adhesive waterproofing membranes

Product: KÖSTER KSK SY 15




**RESIDENTIAL COMPLEX
"PARADISE PLACE"**

Description: 14000 m² Horizontal and vertical waterproofing of foundations with KÖSTER ECB 1.5 U S Membranes.

Product: KÖSTER ECB 1.5 U S





EYESCAN EYE HOSPITAL

Description: Positive side waterproofing of the semi-subsurface basement with bitumen based waterproofing systems

Product: KÖSTER Deuxan 2K professional



APARTAMENT HOUSE BULDURI

Description: External basement waterproofing with cold self-adhesive waterproofing membranes

Products: KÖSTER Bitumenreiniger
KÖSTER Deuxan Professional
KÖSTER KBE-Flüssigfolie
KÖSTER KSK SY 15
KÖSTER NB Elastik grau





TUNNEL WATERPROOFING

Description: Waterproofing tunnels with KÖSTER Deuxan 2C

Product: KÖSTER Deuxan 2C



DELOITTE BUILDING

Description: External basement waterproofing with cold self-adhesive waterproofing membranes

Product: KÖSTER Deuxan 2C



ANNE FRANK ENDOWMENT

Description: External basement waterproofing with bitumen based waterproofing system

Product: KÖSTER Deuxan 2C



A FAMILY HOUSE "HUF HOUSE"

Description: Horizontal and vertical waterproofing of foundations with KÖSTER ECB membranes

Product: KÖSTER ECB 2.0 U S





**RESIDENTIAL AND BUSINESS
BUILDING COPERNICUS**

Description: The building is unique with its 4 underground floors built with a top-down construction system and waterproofed with KÖSTER ECB 2.0 US.

Product: KÖSTER ECB 2.0 U S



APARTAMENT HOUSE

Description: Waterproofing of the foundation slab with the cold self adhesive membrane KÖSTER KSK SY 15.

Product: KÖSTER KSK SY 15





NEW CONSTRUCTION OF SEVERAL APARTMENT HOUSES

Description: Exterior basement waterproofing with KÖSTER Bikuthan 2C and KÖSTER NB 4000 including embedding of the KÖSTER Glas Fiber Mesh.

Products: KÖSTER Bikuthan 2C
KÖSTER NB 4000



We are there for you – worldwide.

Issued: 9/2022



// Contact us

KÖSTER BAUCHEMIE AG
Dieselstraße 1-10
D-26607 Aurich
Tel.: +49 4941 9709 0
E-Mail: info@koster.eu

www.koster.eu

Follow us on social media:



KÖSTER
Waterproofing Systems



DEUTSCHE
BAUCHEMIE

